

# 2018 Toyota Hiace

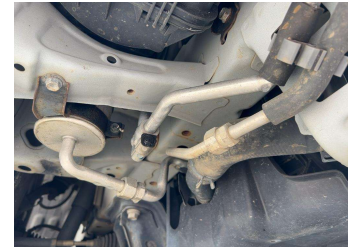
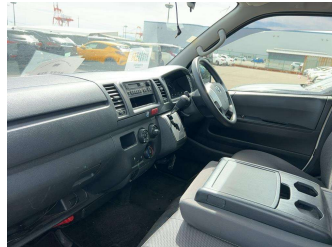


**FINANCE THIS CAR FROM**  
**\$143.84\***  
**PER WEEK**

**DEALS ON WHEELS**  
 Motor Group Ltd

**mtf** **Oxford FINANCE** **UDC**

\*Finance calculation based on a 60 month term, 30% deposit and with an example annual fixed interest rate of 13.95%. Actual interest rate may be higher or lower. Includes an establishment fee of \$495.00 and a monthly maintenance fee of \$10.00. Full term total amount payable of \$48,496.13. Estimate only, not an offer of finance. Terms, conditions and lending criteria apply.



**Purchase Price** **\$36,990**

Includes GST, Registration & Licensing

Note: A Clean Car fee/rebate does not apply to this vehicle

**Indicative repayments**

**\$143.84 per week\***

Based on a 60 month term & 30% deposit.  
 Total repayments (260) = **\$48,496.13**

**UDC**  
**mtf** **Oxford FINANCE**  
**NOW** repay your way

Gain peace of mind with Mechanical Breakdown Insurance. **Ask us how.**

**Protecta**  
**INSURANCE**  
 an ASSURANT company

**Top features**

None Listed

Body Style  
**5 door**

Odometer  
**161,000 km**

Engine  
**2800 cc**

Fuel Type  
**Diesel**

Transmission  
**FAT**

Wheels  
 -

VIN  
 -

Interior  
 -

Safety



Based on 2023 UCSR rating for 05-19 models

Reg No.  
 -

Ext Colour  
**White**

History  
 -

Seats  
 -

CO2 Emissions  
**★★★☆☆☆**  
**237 grams/km**

Energy Economy  
**★★☆☆☆☆**

**Annual fuel cost of \$3,610**  
**9.1L per 100km**

Cost per year is an estimate based on diesel price of \$2.00 per litre and an average distance of 14000 km includes Road User Charges. Emissions and Energy Economy figures standardised to 3P WLTP.

**Stock ID: 3016**



Deals on Wheels | Phone 04 528 0123 | Email dealsonwheels@xtra.co.nz  
 Deals on Wheels Motor Group LTD , 859-861 Fergusson Drive, Upper Hutt  
 Central, Upper Hutt 5018, New Zealand  
 www.dealsonwheelsnz.co.nz

**B** **4.55** | 398 reviews

\* Deals on Wheels is not a lender nor a financial adviser. Any amounts displayed should not be seen as an offer of finance or taken as financial advice. The interest rate, fees and loan term used in this calculation may not actually represent those available from lenders. Actual interest rates, fees and loan terms will vary per lender and are typically based on an assessment of your credit risk and responsible lending criteria. Any repayment amounts displayed are indicative only and have been calculated using several other indicative inputs. The interest rate used in this calculation is an arbitrary 13.95%, however exact interest rates vary per lender. The term of the loan used in this calculation is 60 month. Exact terms available vary per lender although options typically include 6, 12, 18, 24, 36, 48 and 60 months. This calculation also includes two typical mandatory fees charged by lenders. These are an account admin fee of \$10.00 per month (other payment frequencies may be available) and a one-off establishment fee of \$495.00. Typically, this fee can be paid upfront or, as in this calculation, be capitalised over the contract term, ie. included in the loan amount. These fees can vary per lender and other non-mandatory fees and charges may also apply. The total amount of repayments has been calculated by multiplying 260 weekly repayments (based on a 60 month term) by the weekly repayment amount of \$143.84 which equals \$48,496.13. This calculator does not consider any of your own personal circumstances and we strongly suggest you seek budgeting advice prior to committing to any loan contract. Responsible lending criteria and lender terms and conditions will likely apply to any finalised loan contract. Proof of security and/or vehicle insurance may also be required before proceeding.