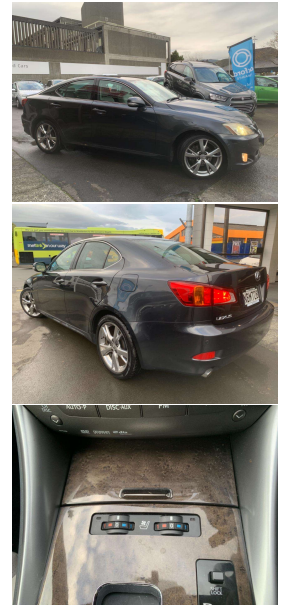
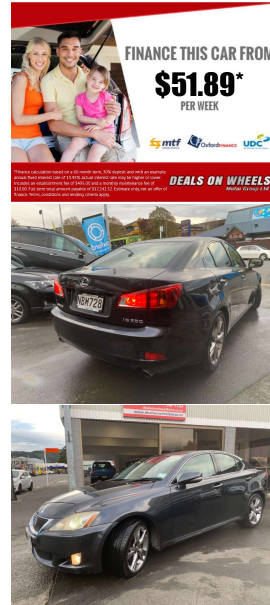


# 2008 Lexus IS250 LTD 2.5L \* NZ New \*



## VEHICLE INFORMATION

### Cash Price

Includes GST,  
Registration &  
Licensing

**\$12,500**

Finance this vehicle  
from only

**\$51.89**

per week\*

Total Amount Payable

**\$17,242.52**



Gain peace of mind  
with Mechanical  
Breakdown Insurance.  
Ask us how.

### Body

Sedan

### Odometer

123,239 km

### Engine

2500 cc

### Fuel Type

Petrol

### Transmission

Automatic, Rear Wheel

### Wheels

-

### VIN

JTHBK262505088262

### Reg No.

NBM728

### Ext Colour

GRAY

### History

-

### Seats

4 seats, Leather

### Interior

Beige, Leather

### Audio

CD Player

### Stock ID

2407

### Exterior Features

- » Alarm
- » Alloy Wheels
- » Body Kit (Factory)
- » Car Alarm
- » Electric Mirrors
- » Face Lift Model
- » Fog Lights
- » Multiple Airbags
- » PUSH BUTTON START
- » Rear Vision Camera

### Interior Features

- » Air Conditioning
- » CD Changer
- » CD Player
- » Central Locking
- » Child seat anchor points
- » Climate Control
- » Digital Display
- » Heated Seats

### Mechanical Features

- » ABS Braking w/ EBD
- » Cruise Control
- » ESP
- » Paasenger and Drivers Airbags

**DEALS ON WHEELS**  
Motor Group Ltd

Deals on Wheels, Phone 04 528 0123, Email [dealsonwheels@xtra.co.nz](mailto:dealsonwheels@xtra.co.nz)  
DEALS ON WHEELS MOTOR GROUP LTD, 657-661 Ferguson Drive, Upper Hut Central, Upper  
Hut 5010, New Zealand  
[www.dealsonwheelsnz.co.nz](http://www.dealsonwheelsnz.co.nz)

\* Finance calculation based on a 60 month term, 30% deposit and with an example annual fixed interest rate of 13.95%. Actual interest rate may be higher or lower. Includes an establishment fee of \$495.00 and a monthly maintenance fee of \$10.00. Full term total amount payable of \$17,242.52. Estimate only, not an offer of finance. Terms, conditions and lending criteria apply.