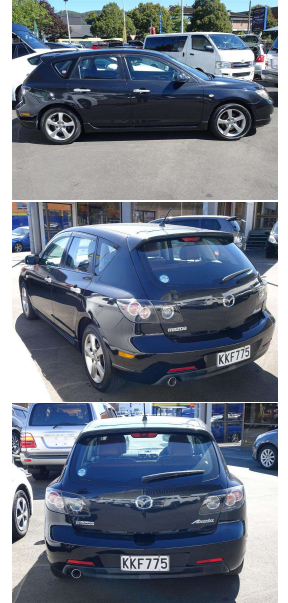
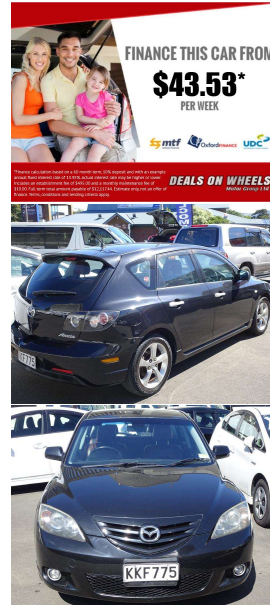


2006 Mazda AXELA 20S Sport Hatch



VEHICLE INFORMATION

Cash Price

Includes GST,
Registration &
Licensing

\$7,990

Finance this vehicle
from only

\$43.53

per week*

Total Amount Payable

\$12,117.44



Body

Hatchback

Odometer

104,954 km

Engine

1998 cc

Fuel Type

Petrol

Transmission

Automatic, 2WD

Wheels

-

VIN

7AT0C13JX17209610

Reg No.

KKF775

Ext Colour

Black

History

-

Seats

-

Interior

Brown

Audio

-

Stock ID

1962



Gain peace of mind
with Mechanical
Breakdown Insurance.
Ask us how.

Exterior Features

- » Alarm
- » Alloy Wheels
- » Car Alarm
- » Electric Mirrors
- » Electric Mirrors (Retractable)
- » Fog Lights
- » Mitipal Air-Bags
- » Monsoons
- » Nudge Bar
- » Reserving Camera
- » Spare Wheel Cover

Interior Features

- » Air Conditioning
- » CD Player
- » Central Locking
- » Child seat anchor points
- » Climate Control
- » Digital Display

Mechanical Features

- » ABS Braking
- » Sports Exhaust

DEALS ON WHEELS
Motor Group Ltd

Deals on Wheels, Phone 04 528 0123, Email dealsonwheels@xtra.co.nz
50 Main Street, Upper Hutt 5018, New Zealand
www.dealsonwheelsnz.co.nz

* Finance calculation based on a 60 month term, 10% deposit and with an example annual fixed interest rate of 13.95%. Actual interest rate may be higher or lower. Includes an establishment fee of \$495.00 and a monthly maintenance fee of \$10.00. Full term total amount payable of \$12,117.44. Estimate only, not an offer of finance. Terms, conditions and lending criteria apply.