

2016 Honda Odyssey ABSOLUTE

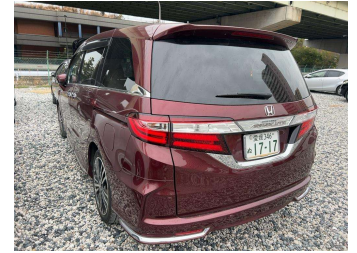


FINANCE THIS CAR FROM
\$87.52*
 PER WEEK

mtf Oxford Finance UDC

*Finance calculation based on a 60 month term, 30% deposit and with an average annual fuel expense of \$1,000. Actual interest rates may vary. Dealer's margin included in calculation. For a 60 month term, monthly repayments of \$87.52 will result in a total amount repaid of \$29,353.46. Excludes GST, license, and other charges. Terms, conditions and leasing rates apply.

DEALS ON WHEELS
 Motor Group Ltd



Purchase Price **\$21,990**

Includes GST, Registration & Licensing

Indicative repayments
\$87.52 per week*

Based on a 60 month term & 30% deposit.
 Total repayments (260) = **\$29,353.46**

UDC
 mtf Oxford Finance
 NOW

Gain peace of mind with
 Mechanical Breakdown
 Insurance. **Ask us how.**

Protecta
 INSURANCE

an ASSURANT company

Top features

- » Alarm
- » Alloy Wheels

Body Style
People Movers

Odometer
86,569 km

Engine
2400 cc

Fuel Type
Petrol

Transmission
DA

Wheels
 -

VIN
 -

Interior
 -

Safety
 -

Reg No.
 -

Ext Colour
WINE

History
 -

Seats
 -

CO2 Emissions
 -

Energy Economy
 -

Stock ID: 3150



Deals on Wheels | Phone 04 528 0123 | Email dealsonwheels@xtra.co.nz
 Deals on Wheels Motor Group LTD , 859-861 Fergusson Drive, Upper Hutt
 Central, Upper Hutt 5018, New Zealand
 www.dealsonwheelsnz.co.nz

B 4.56 | 415 reviews

* Deals on Wheels is not a lender nor a financial adviser. Any amounts displayed should not be seen as an offer of finance or taken as financial advice. The interest rate, fees and loan term used in this calculation may not actually represent those available from lenders. Actual interest rates, fees and loan terms will vary per lender and are typically based on an assessment of your credit risk and responsible lending criteria. Any repayment amounts displayed are indicative only and have been calculated using several other indicative inputs. The interest rate used in this calculation is an arbitrary 13.95%, however exact interest rates vary per lender. The term of the loan used in this calculation is 60 month. Exact terms available vary per lender although options typically include 6, 12, 18, 24, 36, 48 and 60 months. This calculation also includes two typical mandatory fees charged by lenders. These are an account admin fee of \$10.00 per month (other payment frequencies may be available) and a one-off establishment fee of \$495.00. Typically, this fee can be paid upfront or, as in this calculation, be capitalised over the contract term, ie. included in the loan amount. These fees can vary per lender and other non-mandatory fees and charges may also apply. The total amount of repayments has been calculated by multiplying 260 weekly repayments (based on a 60 month term) by the weekly repayment amount of \$87.52 which equals \$29,353.46. This calculator does not consider any of your own personal circumstances and we strongly suggest you seek budgeting advice prior to committing to any loan contract. Responsible lending criteria and lender terms and conditions will likely apply to any finalised loan contract. Proof of security and/or vehicle insurance may also be required before proceeding.