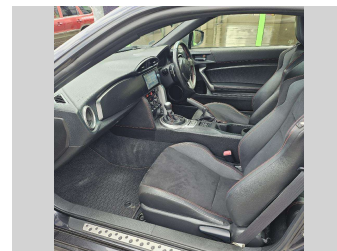
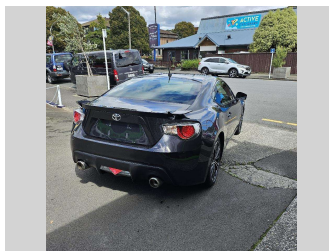
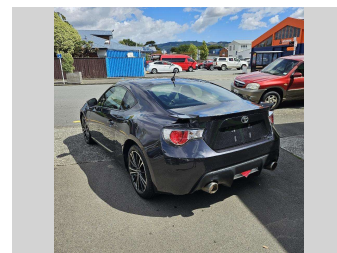
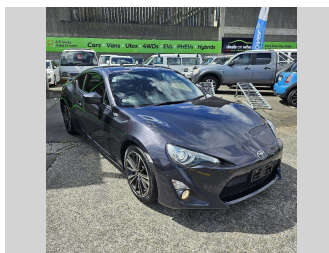


2012 Toyota 86 GT LIMITED




Purchase Price **\$20,990**
Includes GST, Registration & Licensing

Indicative repayments
\$83.77 per week*
Based on a 60 month term & 30% deposit.
Total repayments (260) = **\$28,077.28**

Gain peace of mind with **Mechanical Breakdown Insurance. Ask us how.**

Top features

- » ABS Braking
- » Air Conditioning
- » Alarm
- » Alloy Wheels
- » CD Player
- » Central Locking
- » Child seat anchor poin...
- » Climate Control
- » Daytime Running Lights
- » Digital Display
- » Electric Mirrors (Retr...
- » Heated Seats
- » Multiple Airbags
- » Passenger & Drivers Ai...
- » PUSH BUTTION START
- » Rear Vision Camera
- » Spoiler
- » Sports Exhaust

Body Style	Sports	Reg No.	-
Odometer	119,000 km	Ext Colour	GRAY
Engine	2000 cc	History	-
Fuel Type	Petrol	Seats	-
Transmission	Automatic	CO2 Emissions	★★★★☆
Wheels	-	206 grams/km	
VIN	7AT0H65RX24013783	Energy Economy	★☆☆☆☆
Interior	Gray, Leather	Annual fuel cost of \$3,490	
Safety		8.9L per 100km	
	Based on 2023 VSRR rating	Cost per year is an estimate based on petrol price of \$2.80 per litre and an average distance of 14000 km. Emissions and Energy Economy figures standardised to 3P WLTP.	
		Stock ID: 3104	



Deals on Wheels | Phone 04 528 0123 | Email dealsonwheels@xtra.co.nz
Deals on Wheels Motor Group LTD , 859-861 Fergusson Drive, Upper Hutt
Central, Upper Hutt 5018, New Zealand
www.dealsonwheelsnz.co.nz

* Deals on Wheels is not a lender nor a financial adviser. Any amounts displayed should not be seen as an offer of finance or taken as financial advice. The interest rate, fees and loan term used in this calculation may not actually represent those available from lenders. Actual interest rates, fees and loan terms will vary per lender and are typically based on an assessment of your credit risk and responsible lending criteria. Any repayment amounts displayed are indicative only and have been calculated using several other indicative inputs. The interest rate used in this calculation is an arbitrary 13.95%, however exact interest rates vary per lender. The term of the loan used in this calculation is 60 months. Exact terms available vary per lender although options typically include 6, 12, 18, 24, 36, 48 and 60 months. This calculation also includes two typical mandatory fees charged by lenders. These are an account admin fee of \$10.00 per month (other payment frequencies may be available) and a one-off establishment fee of \$495.00. Typically, this fee can be paid upfront or, as in this calculation, be capitalised over the contract term, ie. included in the loan amount. These fees can vary per lender and other non-mandatory fees and charges may also apply. The total amount of repayments has been calculated by multiplying 260 weekly repayments (based on a 60 month term) by the weekly repayment amount of \$83.77 which equals \$28,077.28. This calculator does not consider any of your own personal circumstances and we strongly suggest you seek budgeting advice prior to committing to any loan contract. Responsible lending criteria and lender terms and conditions will likely apply to any finalised loan contract. Proof of security and/or vehicle insurance may also be required before proceeding.